



WORLD **PANCREATIC**  
CANCER COALITION<sup>SM</sup>

# Kerri Kaplan, President and CEO Lustgarten Foundation

LUSTGARTEN  
FOUNDATION  
PANCREATIC CANCER RESEARCH

LUSTGARTEN FOUNDATION™

World Pancreatic Cancer Coalition  
The Science of Pancreatic Cancer: A Global  
Perspective  
May 8, 2019



WORLD **PANCREATIC**  
CANCER COALITION<sup>SM</sup>

# World Pancreatic Cancer Coalition Research

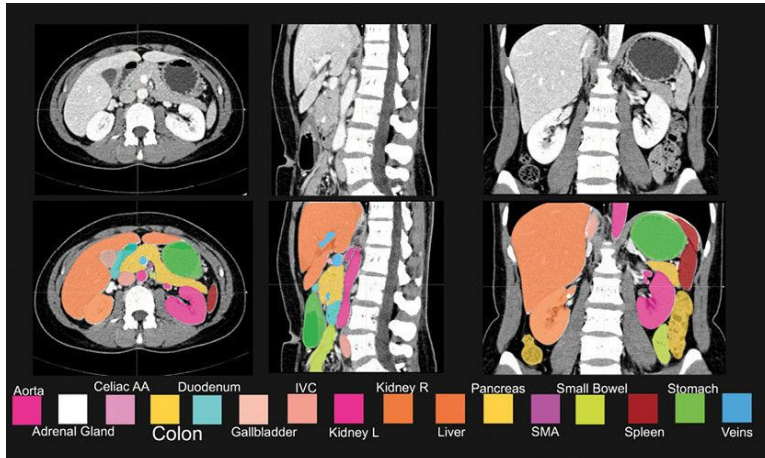
- The cumulative research spend has increased from **\$200,000,000 in 2016** to **\$260,000,000 in 2018** by organizations in the World Pancreatic Cancer Coalition
- This investment spans research in biology, early detection, and treatment
- 41 WPCC member organizations fund research

***This funding is making a  
difference!***

## CancerSEEK Blood Test

- Developed for 8 cancers including pancreatic:
  - Tested in patients with early stages of cancer
  - Specificity is 99% and sensitivity is 70% for pancreatic cancer
  - Fast track status from FDA for pancreatic and ovarian cancers, growing interest from industry
- Next Steps:
  - Continue to improve the sensitivity and the overall test
  - Follow 50,000 healthy individuals

## Better Imaging: FELIX project



- Teach computers to detect smaller pancreatic tumors on CT scans
- Designed by the “driverless car” team
- Approx. 25% of pancreatic cancers detected on the scans by FELIX imaging were not detected by the radiologist
- Goal is to commercialize a rapid, reliable test that can be used in the clinic

## Personalized Medicine – Genetic Testing

- Genetic testing recommended for all pancreatic cancer patients as the new standard of care
- At some academic centers like Dana Farber, patients get genetic sequencing of both the tumor and inherited DNA
- At DF, they published that approximately 1/3 of patients had a mutation or genetic alteration that was treated with a therapy either in clinical trials or used for other types of cancer

## Better Therapy: Personalized Medicine - Organoids



- Lustgarten, SU2C and Pancreatic Cancer Canada funding the clinical trial to determine which standard of care a patient would benefit from the most
- Next step is to use organoids to test investigational therapies for those that won't respond to standard of care



## Clinical Trials Example

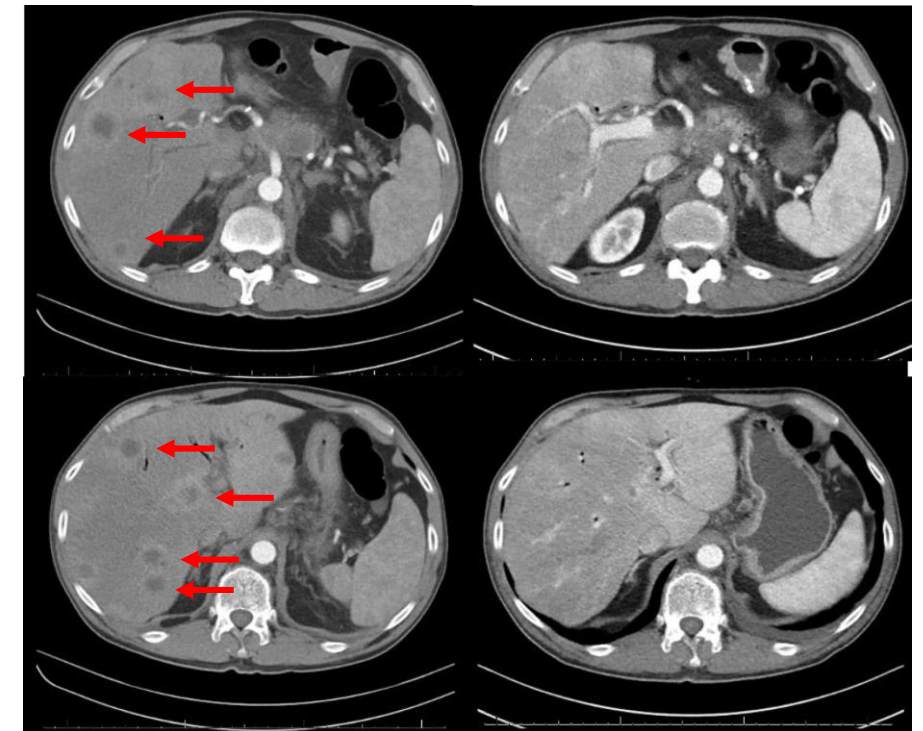
### Lustgarten-SU2C New Therapies Challenge

- Seven teams with potential to go in to clinical trials in a year
- One team at Huntsman Cancer Institute now has a new combination drug treatment with promising clinical results. Published in Nature Medicine, 3/19
- Pancan funded the preclinical work at UNC



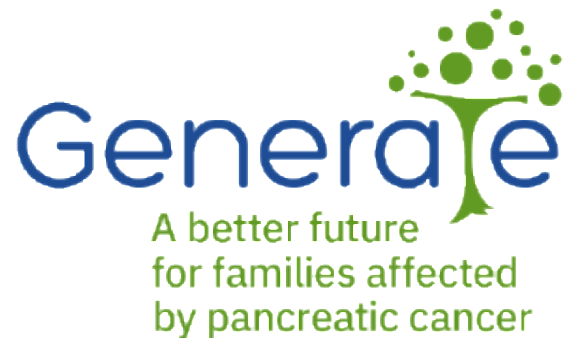
Drugs for 2 Days

Drugs for 2 Months





## GENetic Education, Risk Assessment, and Testing Study ([generatestudy.org](http://generatestudy.org))



- Test family members who have a close relative with pancreatic cancer caused by an inherited mutation
- Includes genetic counseling
- First in-human prevention trials using a vaccine
- New biomarkers that can strengthen the work of CancerSEEK

## GENERATE 2.0

- Test all patients for germline mutations, provide genetic counseling
- Include high-risk family members of patients without a known mutation
- Nationwide screening program, MRI/MRCP done locally, read by centralized study radiologists
- Create the most comprehensive publicly available blood sample and imaging biobank for research



WORLD **PANCREATIC**  
CANCER COALITION<sup>SM</sup>

# Barbara Kenner, PhD

*Founder, Kenner Family Research Fund*



WORLD **PANCREATIC**  
CANCER COALITION<sup>SM</sup>

# Talia Golan, MD

*Medical Director, Phase I Program and Sheba Pancreatic Program,  
Chaim Sheba Medical Centre  
(Israel)*



WORLD **PANCREATIC**  
CANCER COALITION<sup>SM</sup>

# Diane Simeone, MD

Professor of Surgery and Pathology  
Director, Pancreatic Cancer Center  
Associate Director, Translational Research  
Perlmutter Cancer Center/NYU Langone Health  
*(NYC, New York)*



WORLD **PANCREATIC**  
CANCER COALITION<sup>SM</sup>

# The Science of Pancreatic Cancer: A Global Perspective



WORLD **PANCREATIC**  
CANCER COALITION<sup>SM</sup>

# Early Detection





WORLD **PANCREATIC**  
CANCER COALITION<sup>SM</sup>

# Treatment Options



WORLD **PANCREATIC**  
CANCER COALITION<sup>SM</sup>

# Clinical Trials



WORLD **PANCREATIC**  
CANCER COALITION<sup>SM</sup>

# Genetic Mutations &

# Familial Pancreatic Cancer



WORLD **PANCREATIC**  
CANCER COALITION<sup>SM</sup>

# Most Exciting Developments



WORLD **PANCREATIC**  
CANCER COALITION<sup>SM</sup>

# Questions



WORLD **PANCREATIC**  
CANCER COALITION<sup>SM</sup>

# Importance of Advocacy



WORLD **PANCREATIC**  
CANCER COALITION<sup>SM</sup>

# Thank You





WORLD **PANCREATIC**  
CANCER COALITION<sup>SM</sup>

CORAL GABLES, FLORIDA | 2019